



INTERCOOP
EUROPE

Precision in feed production Sustainability – OEE - AI

Wolfgang Steiner

23. May 2025



Agenda - Precision in feed production

- Environmental Impact Services
- Transparency – Overall Equipment Efficiency
- PelletingPro – Next level in pelleting performance





Bühler Services
Partnering for better outcomes

Environmental Impact Services

We simplify your sustainability journey.

BÜHLER

We believe that sustainability is the outcome of good business decisions.

By quantifying environmental & business metrics, companies can economically reduce their footprint & differentiate their brand and products.

When sustainability is profitable, it will scale.



We simplify your Sustainability journey

Assess your business & sustainability performance. Quantify the footprint of your company & products, track key operational metrics to gain transparency and build a strategy to differentiate your products and economically reduce your footprint.

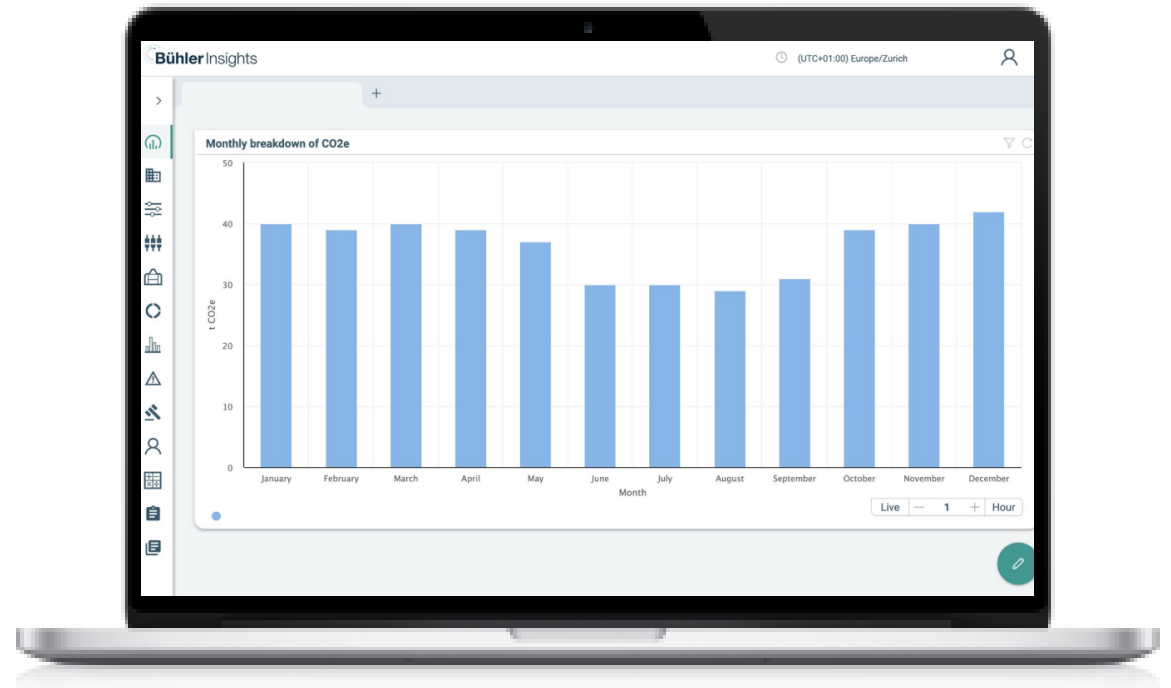
Act on the key levers to optimize your operations & supply chain and communicate outcomes to your stakeholders. Bring your organization together with training and align around one business strategy

Monitor your implementations to build momentum, generate business & sustainable outcomes. Mitigate future risk against competition, price volatilities & regulations.

1

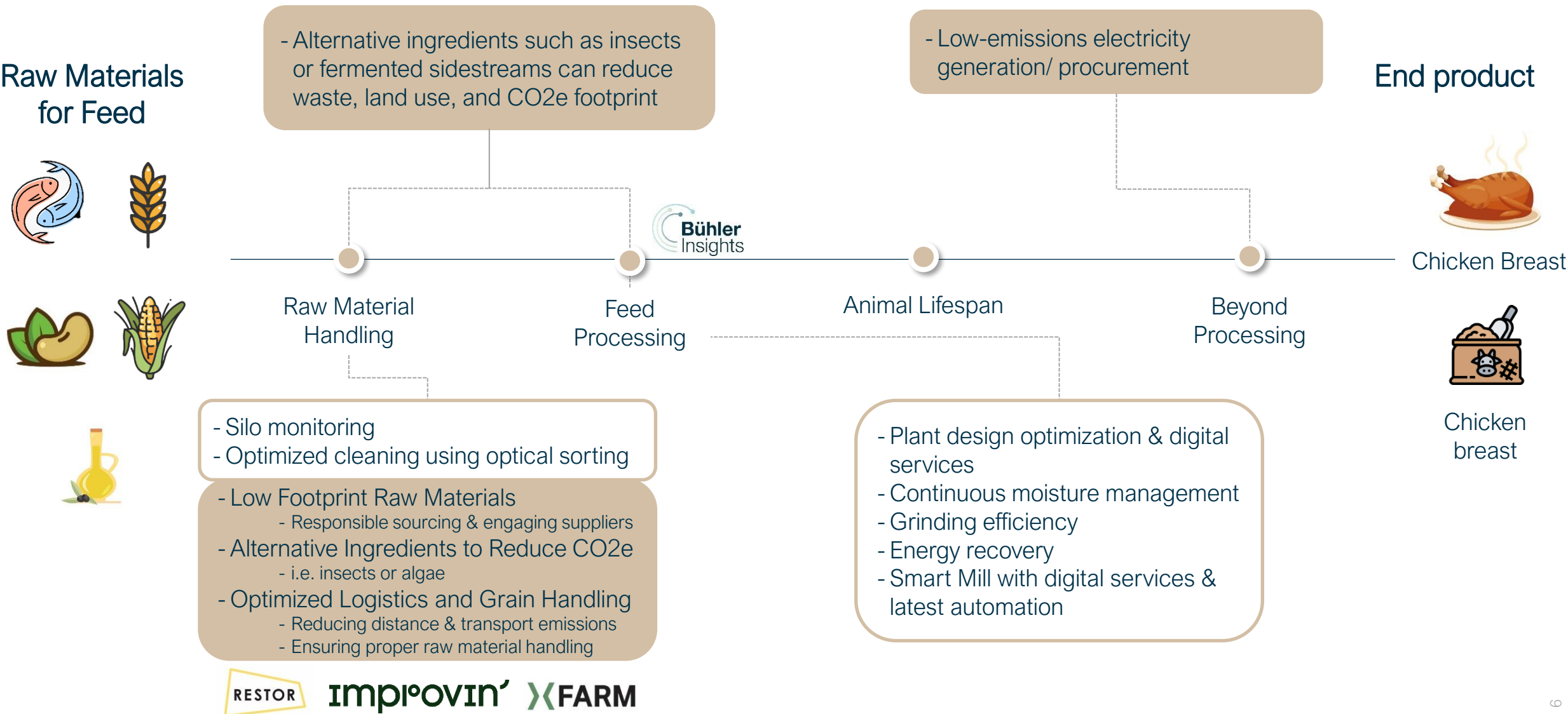
2

3

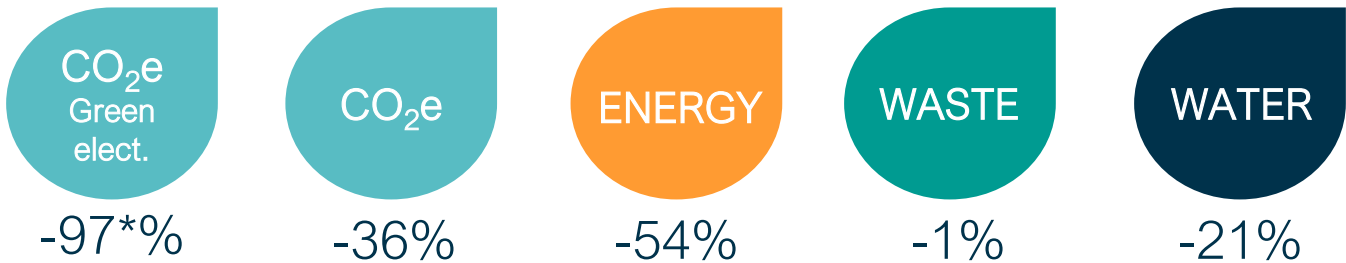


Assess your business & sustainability performance

Across the entire animal protein value chain

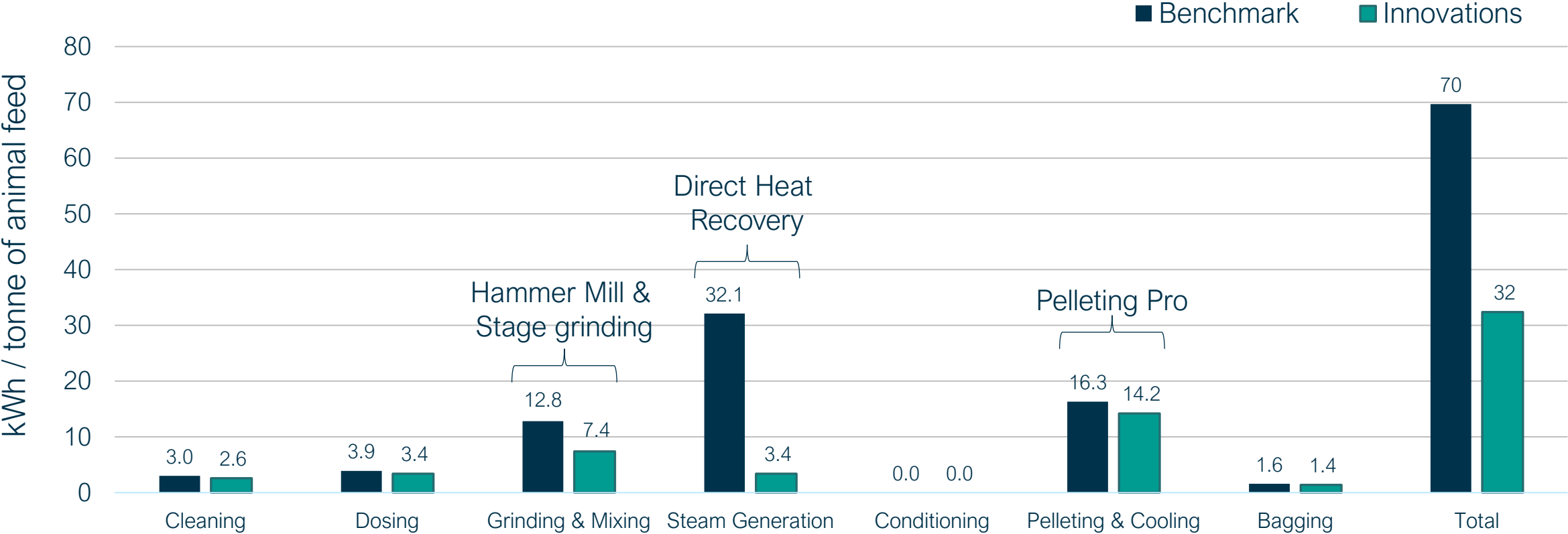


Act on key levers to optimize your operations



Actions for reduction at the plant level:

- Energy reduction through plant optimization actions plan from PAW



Monitor implementation & build momentum with digital & automation solutions

Annual performance of key operational metrics & carbon footprint

Absolute & normalized values to account for business performance

Annual, monthly and/or real time consumption. APIs available.



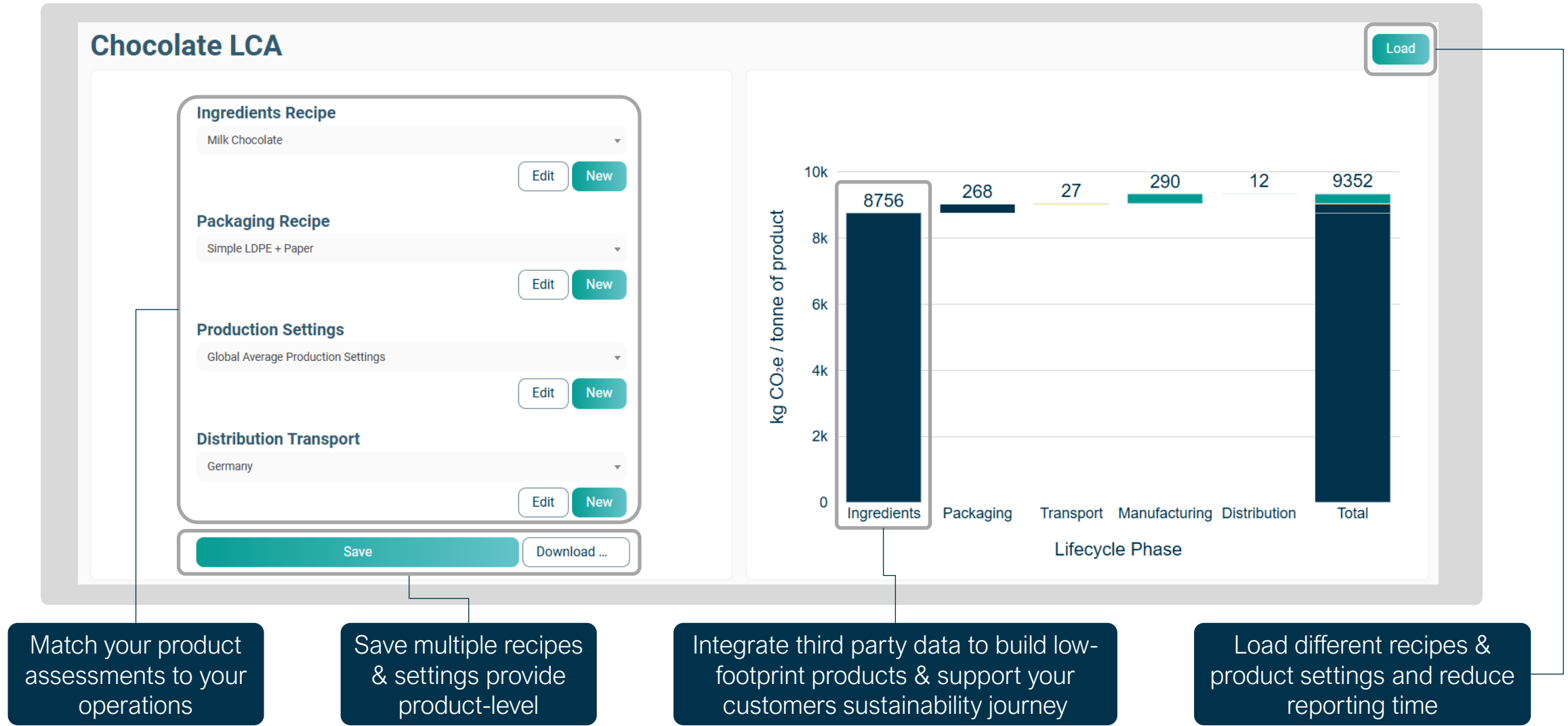
Site by site to identify economic reduction potential & gain ownership

Optimize electricity, gas & water use to reduce cost and footprint. Track reductions in process, building & infrastructure

Use historical data to identify trends

Key success factors: integrating operational & sustainability metrics, establish ownership across the company, one aligned strategy

Differentiate your product and your brand with product assessments



Key success factors: combine supply chain strategy & product assessments, train product management & sales to use material

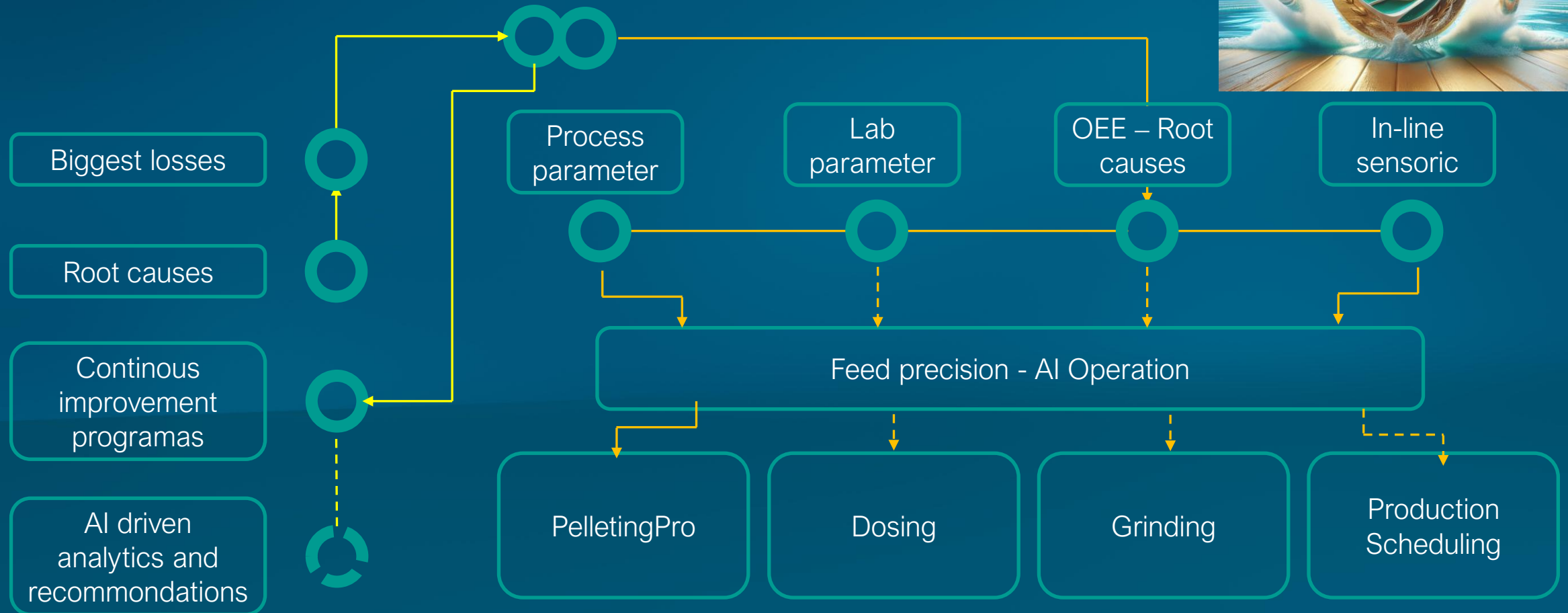
Bühler Services

Partnering for better outcomes

Transparency – Overall Equipment Efficiency

Operational Excellence

Overall Equipment Efficiency



Feed production- Requirements

Olympic in operation

- Digital twin of all plants
- Same KPI's for all plants
- Consolidated view on corporate level
- AI production

Qualified OEE
 $A \times P \times Q$

KPI's

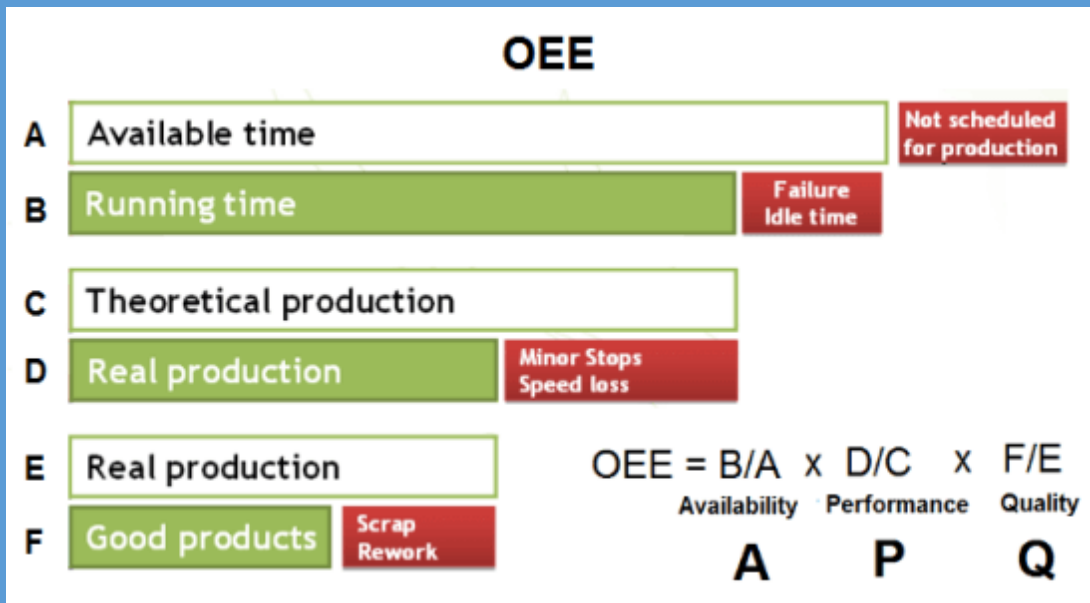
Continuous improvement
program (AI support)

Digital Twin (AI
support)

AI Companion & AI Production

Digital Products - OEE Calculation

OEE is a metric that measures the **operating efficiency** of equipment. This indicator reflects the true productive capacity of industrial equipment and reveals process waste (waste, rework, stoppages, breakdowns, slow speed, etc.) that prevent it from operating at full capacity.



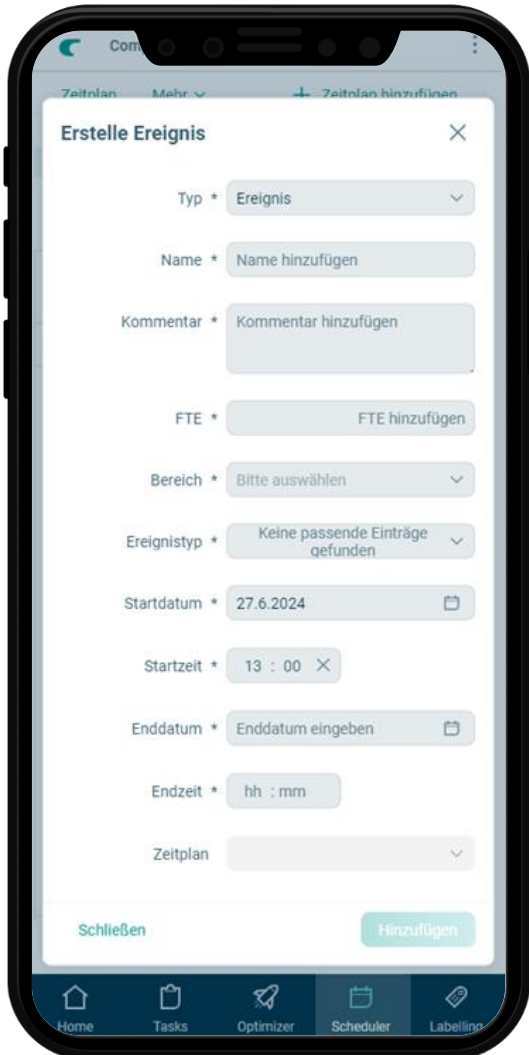
AVAILABILITY: It is calculated by comparing the actual production time with the planned production time.

PERFORMANCE: This parameter indicates the production performance during the operating time compared to what should have been produced at the ideal cycle time

QUALITY: It is the result of the calculation of the good product in relation to the total number of finished products produced.

Companion Plus App

Flexible data input



The Companion Plus App allows flexible data inputs like:

- production related task management
- production time scheduling
- labelling of events
- direct connection to Bühler Insights via API
- **AI features**



Overall Equipment Effectiveness (OEE) – Dashboard information

Do you know your plant efficiency?

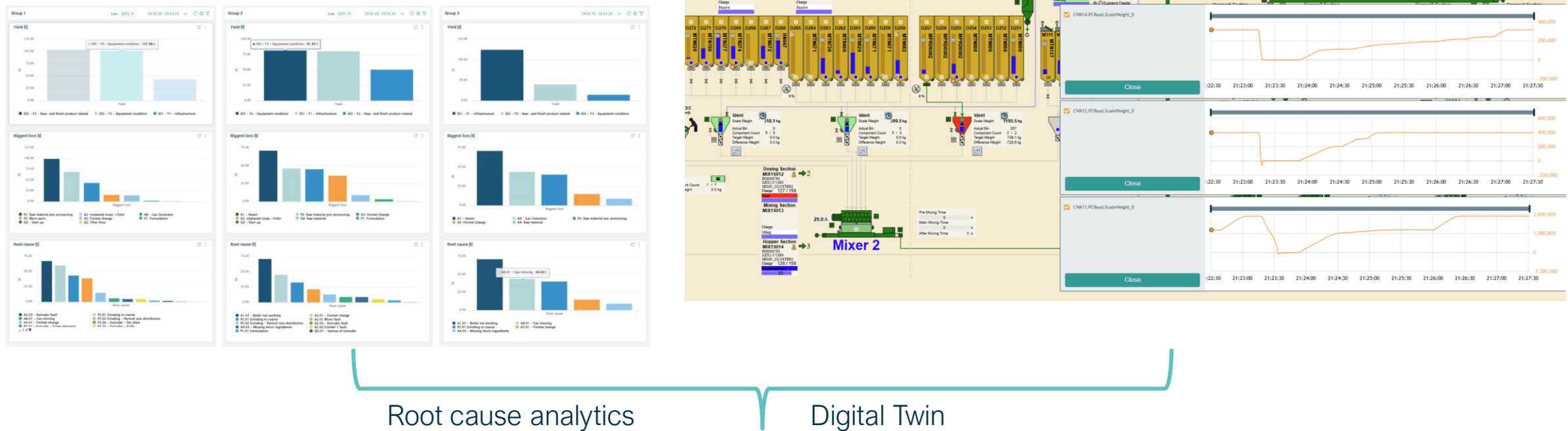


Numbers show typical OEE values and show world-class benchmark* as comparison.

* Source: <https://www.oeo.com/world-class-oeo>

Overall Equipment Effectiveness (OEE) – Dashboard information & Digital Twin

- Implementation of continuously improvement programs



Continuously Improvement Programs (OPEX improvement)
by AI analytics for
Categories/ Biggest losses / Stable production

Bühler Services
Partnering for better outcomes

PelletingPro

Next level in pelleting performance

01

PelletingPro - Challenges



Producing safe, high-quality feed at minimum cost

Raw material

Quality | Availability
Moisture | Sustainability



Production

Capacity | Stability
Operator skills | Energy

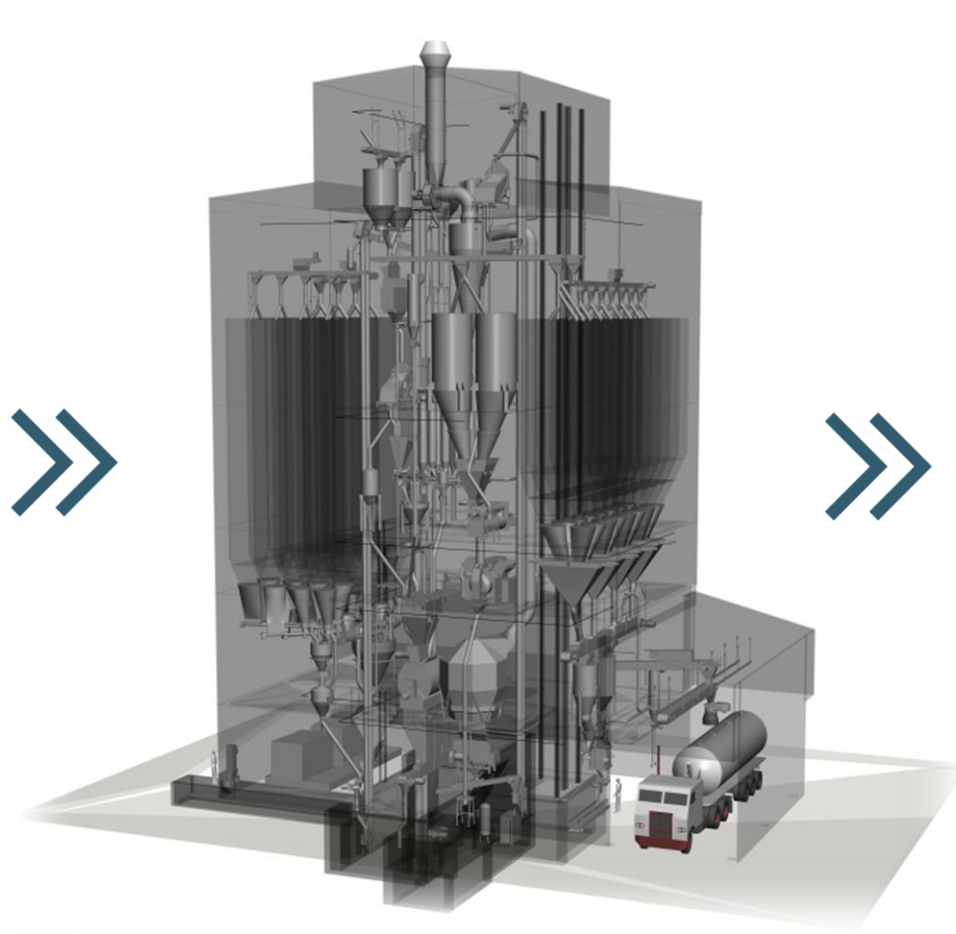


Weather effects

Product moisture | Yield
Feed safety

PelletingPro - Challenges

Yield in the feed plant



100'000 tons raw material input
Yearly capacity of a pelleting line

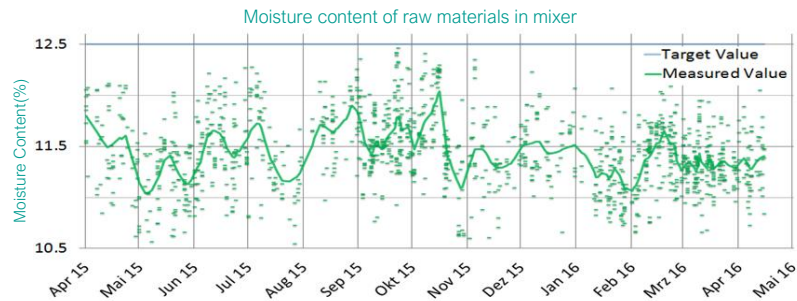
1% or 1'000t yield loss*
equals to 300'000 € of lost raw material
*mainly through inconsistent product moisture

PelletingPro - Challenges

Pellet-moisture and seasonal effects

Raw Material

Seasonal effects lead to raw material moisture content fluctuation

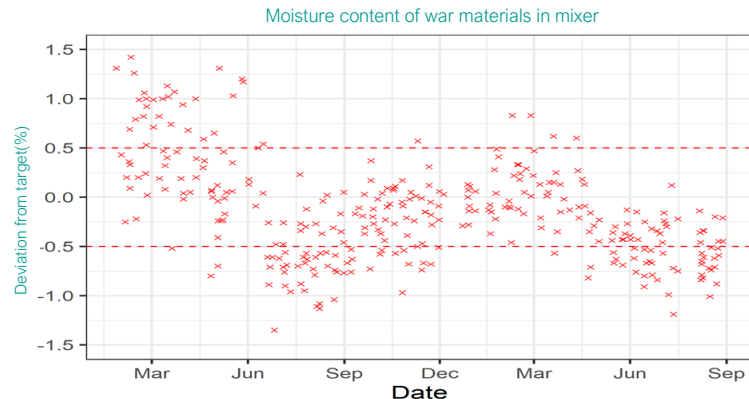


Solution: DCMA moisture addition batchmixer



Operation

Unintended drying during cooling affected by seasonal variability



Solution: DCMA moisture addition batchmixer



02

PelletingPro - benefits



PelletingPro

Next level in pelleting performance



up to **+1%...**

Yield increase on the pelleting line
saves 1'000 tons of raw materials or
300'000 € in costs per year, ROI < 1 year



up to **+20%...**

Pelleting line throughput
up to plus 20'000 tons a year



up to **-20%...**

Less specific energy consumption
saves up to 300 MWh or 100 tons of
CO₂e per year

PelletingPro

Next level in pelleting performance

01



Stabilization of pellet moisture in a range of +/- 0.5 pp of the defined target value

02



Throughput increase due to process stability and increased machine availability

03



Less required interaction of operators

04



Positive effect on feed safety

05



More efficient use of micro-ingredients



03

PelletingPro
What is it?

PelletingPro – Next level in pelleting performance

How does it work?

Step 1

Define pellet moisture target



Step 2

Detect feed mash moisture incl. climate and process conditions



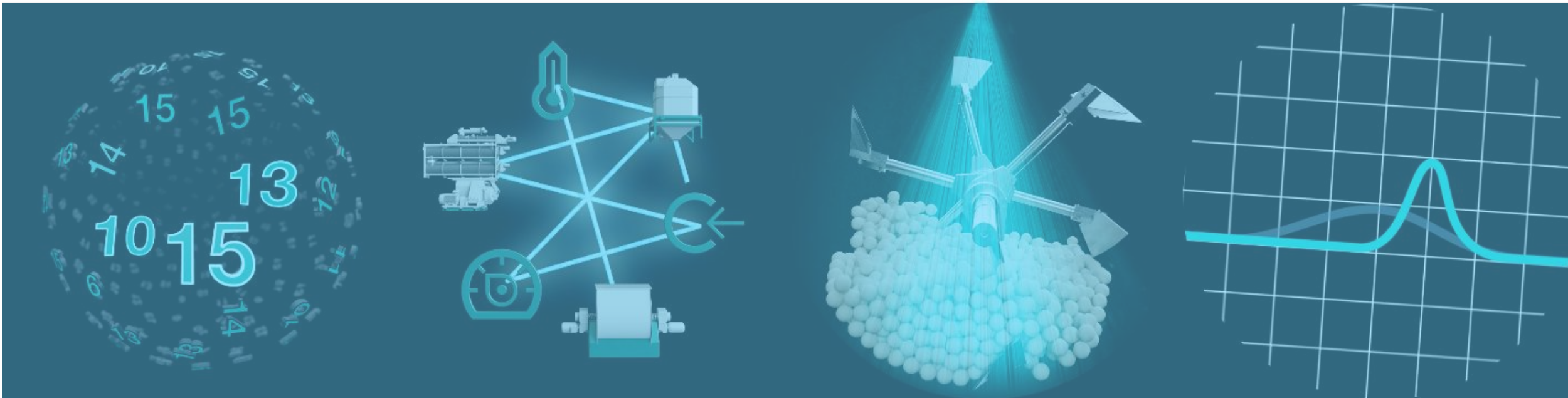
Step 3

Regulate water dosing by using smart, predictive algorithm



Step 4

Optimized pellet moisture distribution & process stability

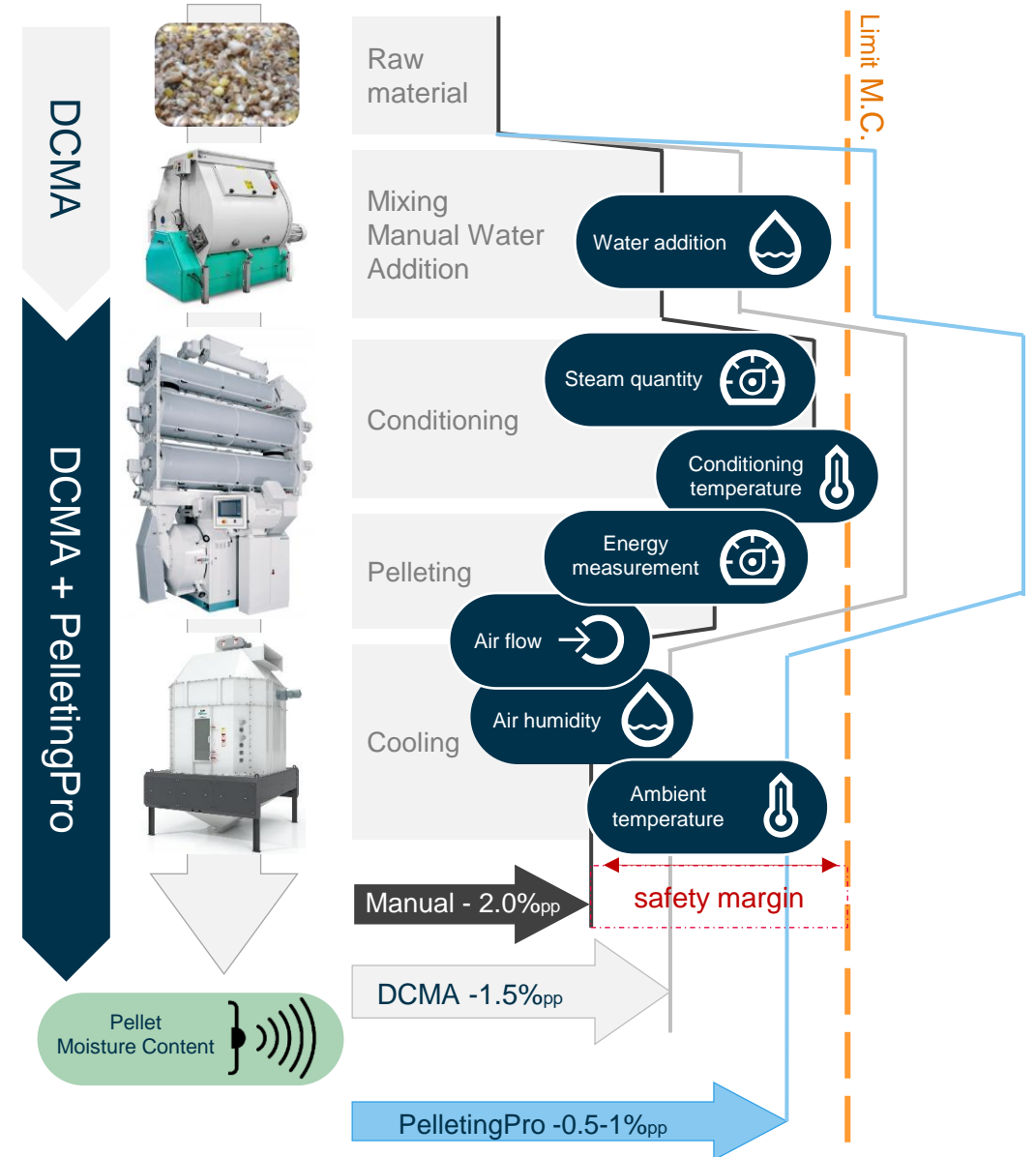
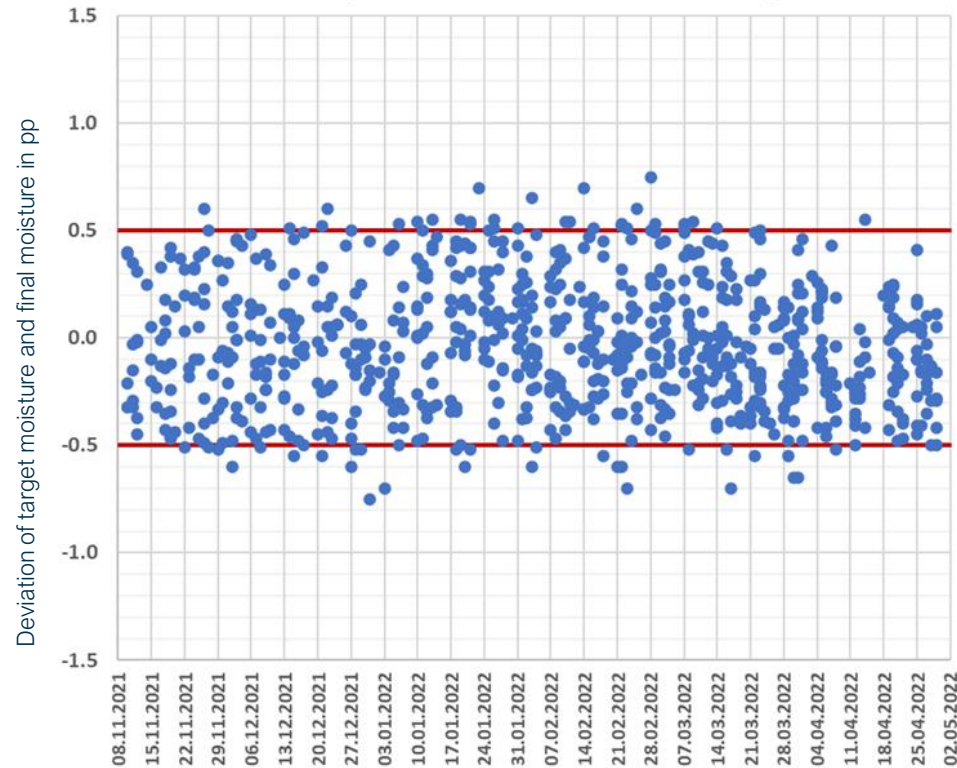


PelletingPro – Next level in pelleting performance

The result

Pellet moisture variation: ± 0.5 ppt

Pellet moisture variation with *PelletingPro*
(continuous measurement)





Multi NIR-Inline System



Smart pelleting process control

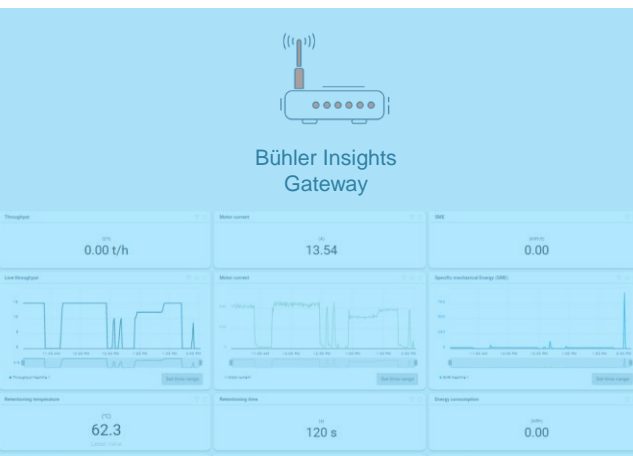


Moisture control sensor package



Pellet moisture sensor

PelletingPro – Features



Bühler Insights gateway & Pelleting Essential



Automatic pellet moisture control



Moisture optimization algorithm



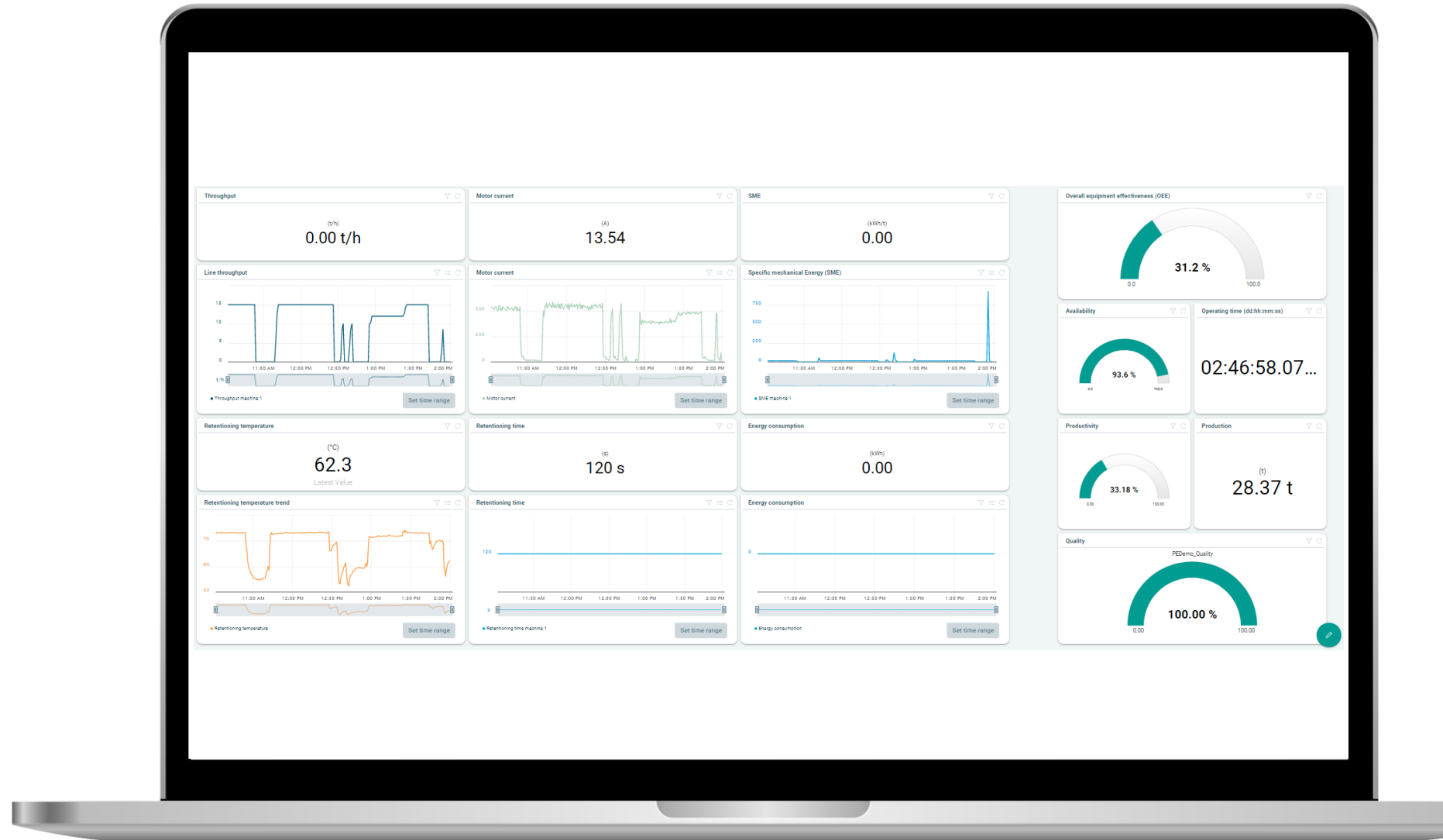
PelletingPro dashboard

PelletingPro

Pelleting Essential dashboard

Pelleting Essential

The Bühler Insights dashboard ensures maximum transparency about pelleting performance and KPIs.

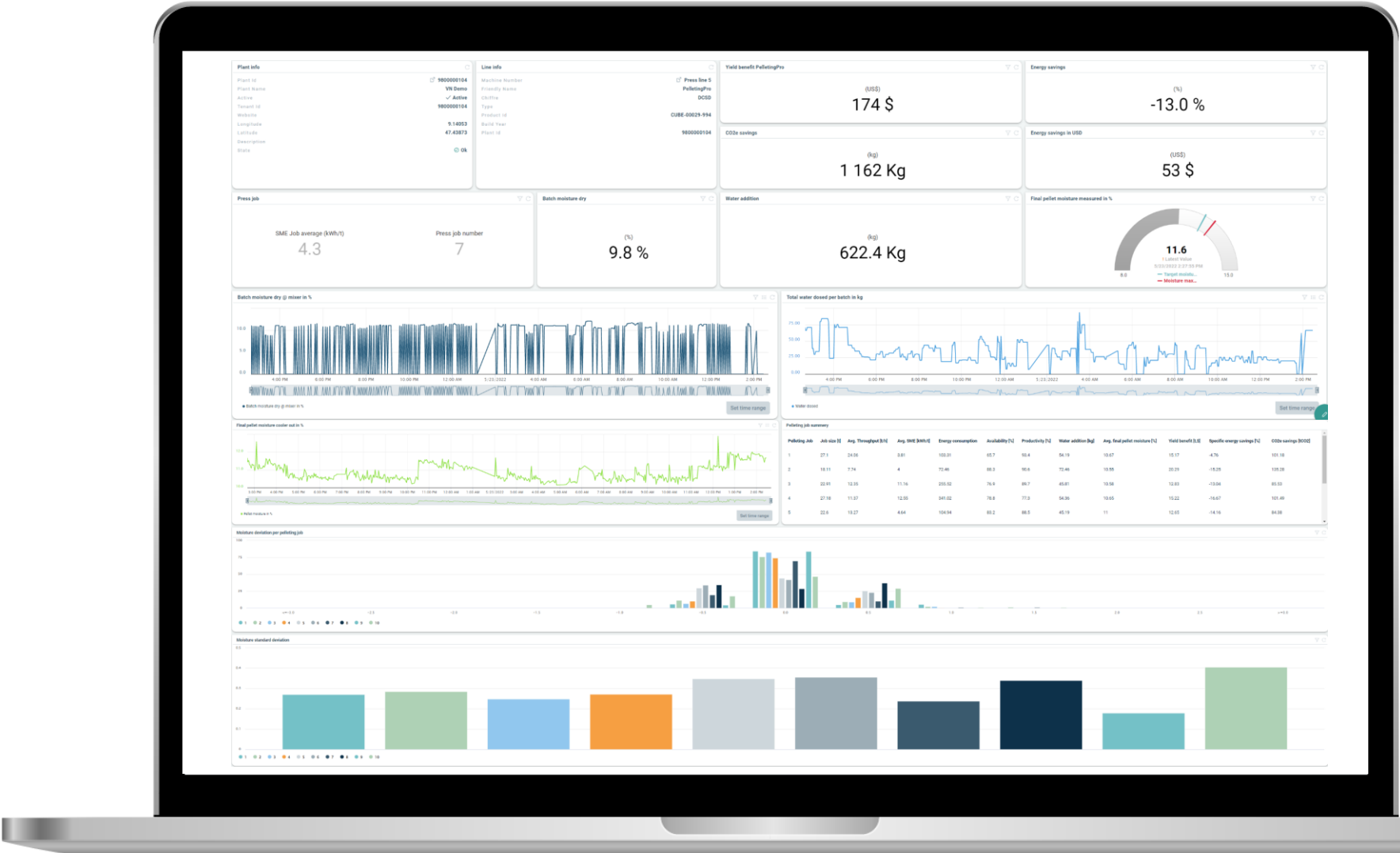


PelletingPro

PelletingPro dashboard

PelletingPro

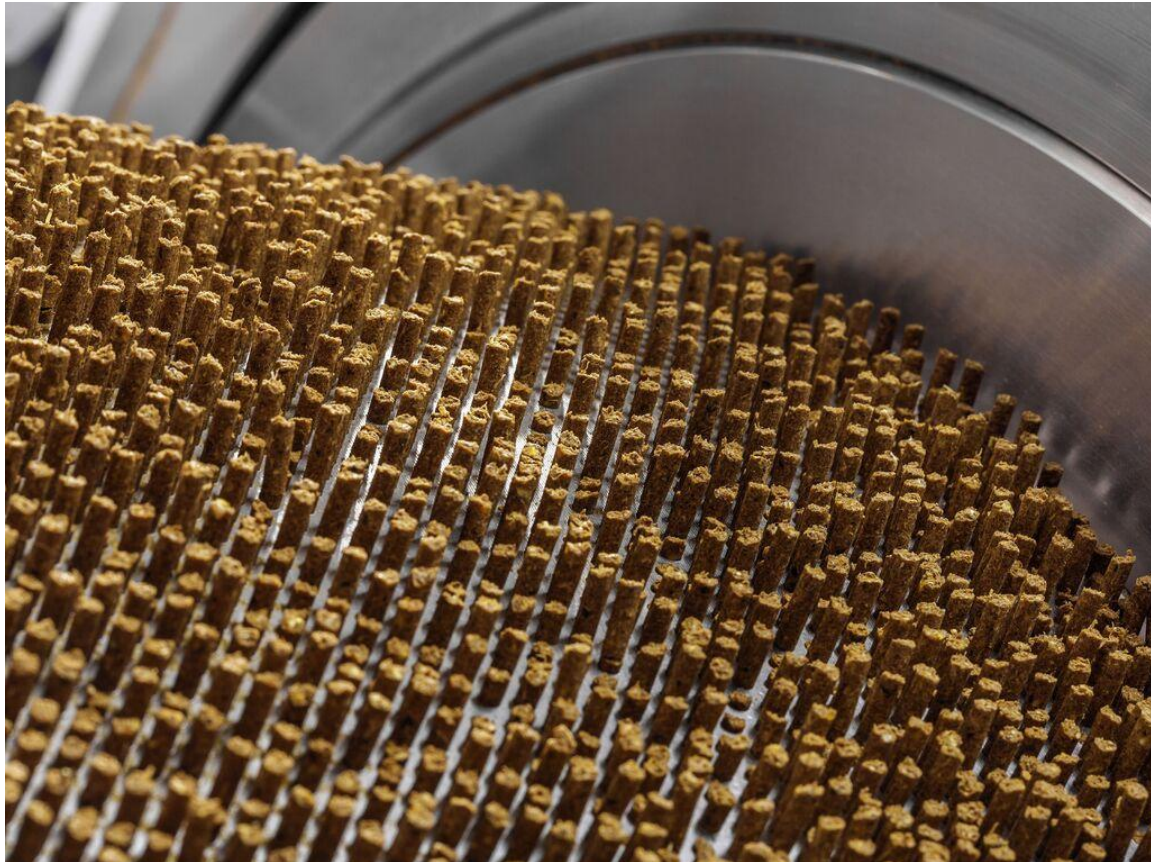
The specific PelletingPro dashboard summarizes the performance of the solution.



04

Sustainability – CO₂e savings
Environmental quantification

Customer Benefit



* of 100,000 tons/year @1% yield increase

Considering a typical pelleting line*,



PelletingPro can save up to
2,000 tonnes CO₂e/year,

which is equivalent to the drawdown



capacity of
100'000 trees/year.

Operational Excellence

Recap: How to win the Olympic gold medal

- Implement a digital vision
 - Developed a Digital Strategy for your Company
 - Start with transparency. OEE, Biggest Losses, AI reporting
- Collect data wherever possible and make them for AI Analytics and AI Models available
- Do the implementation step by step.
 - Take care on change management
- Have your cost under control



A view tips

- Use as less as possible platforms
- Data must present a holistic 360° view
- Implement teams for process optimization and continuously improvement programs